

# Welcome to the School Pathways Knowledge Base!

Here you can find helpful articles and walkthroughs to assist you with the use of the School Pathways Student Information System and other School Pathways Technology Products!



## Webinar Wednesdays!

**New free, open webinars every week.**

[Click Here to watch recordings of our past webinars](#)

- or -

[Click here to register for an upcoming Webinar](#)



## CTE Is Here

**What is CTE?**

[Click here for more information](#)

**How do I set up and use CTE Pathways in School Pathways SIS?**

[Click here to view our CTE Pathways manual.](#)



## All About A-G

### What is A-G?

[Click here for more information.](#)

### How can my school track A-G Requirement Progress for students?

[Click here to view our A-G Requirement Tracking Manual](#)



## PFT Testing

[Click Here for instructions on how to submit PFT Scores](#)

## Using the Knowledge Base

To get started, **Search** using the search box in the header of this page, **Browse** through the articles in the sidebars, or take a look at our **Article Collections** listed below.

**TIP:** Miss our PDF manuals? You can print any article in the Knowledge Base by clicking on the small PDF icon on the floating tab to the right of every page.

We are currently in the process of moving our Legacy Manuals over to the Knowledge Base. We are adding to the Knowledge Base and improving our existing articles every day, so check back often!

**IMPORTANT:** While using School Pathways SIS, for the best experience, please use [Firefox](#), [Chrome](#) or [Safari](#) as your Web Browser. Please **DO NOT USE INTERNET EXPLORER OR MICROSOFT EDGE!**

## Help for Teachers



Visit our [Help for Teachers Home Page](#) to view our collection of teacher manuals and help articles.

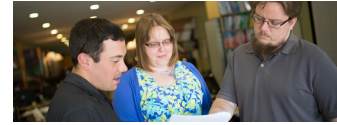
- [Quick Links](#)
  - [Accessing School Pathways](#)
  - [Using the PLS Gradebook](#)
  - [Creating, Archiving, and Copying Master Agreements](#)

## Help for Administrators



- [How to access the SIS](#)
- [How to set up attendance codes and override attendance claims](#)
- [How to set your school's calendar](#)
- [How to set up and customize your school's Report Cards and Rubrics](#)
- [How to set up a new staff record](#)
- [How to add a new Student Record](#)

## Help for CALPADS, CAL Grant, and other State Reporting



- [How to complete a SELA Reconciliation](#)
- [How to calculate CAL Grant GPAs](#)

From:

<https://schoolpathways.com/knowledgebase/> - **School Pathways Knowledge Base**

Permanent link:

<https://schoolpathways.com/knowledgebase/doku.php?id=start&rev=1487180899>

Last update: **2017/02/15 17:48**